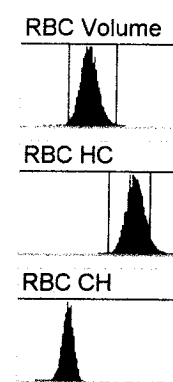
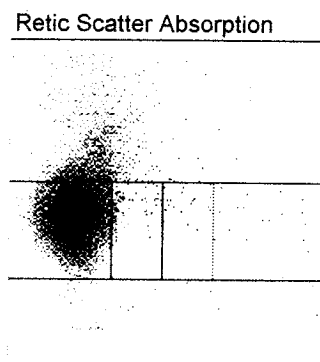
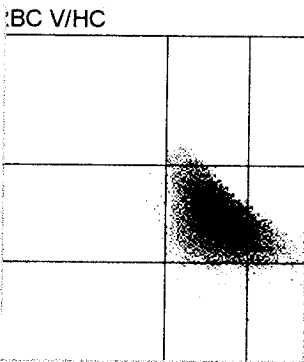


Dopingkjoring Playback
 Aspiration Date/Time 07-Feb-09 19:31:2
 Sample Type PATIENT
 SID ISU00122645
 Rack & Position 15 3
 Sample Selectivity CBC\DIFF\RETIC
 Age & Sex U
 Instrument Number IR07450540
 Species Human
 Sequence 153
FOR LABORATORY USE ONLY

WBC Differential			
	%	#	
WBC		13,9	x10 ⁹ cells/L
Neut	89,9	12,5	x10 ⁹ cells/L
Lymph	5,4	0,8	x10 ⁹ cells/L
Mono	3,7	0,5	x10 ⁹ cells/L
Eos	0,1	0,0	x10 ⁹ cells/L
Baso	0,2	0,0	x10 ⁹ cells/L
LUC	0,7	0,1	x10 ⁹ cells/L
NRBC	0,0	0,0	x10 ⁹ cells/L
LI		1,93	
MPXI		-15,2	



CBC			
WBC	13,9	x10 ⁹ cells/L	
RBC	3,72	* x10 ¹² cells/L	
HGB	13,8	* g/dL	
Cellular HGB	11,9	* g/dL	
HCT	0,32	* L/L	
MCV	86,8	* fL	
MCH	37,0	* pg	
MCHC	42,6	* g/dL	
CHCM	36,8	* g/dL	
CH	31,8	* pg	
RDW	12,6	* %	
HDW	2,91	* g/dL	
PLT	351	* x10 ⁹ cells/L	
MPV	8,3	* fL	
PDW	42,6	* %	
PCT L	0,003	* L/L	

RBC			
RBC	3,72	* x10 ¹² cells/L	
%Macro	0,3		
%Micro	0,5		
%Hypo	0,0		
%Hyper	5,7		
%Micro/%Hypo Ratio	17,11		

HGB			
HGB	13,8	* g/dL	
Cellular HGB	11,9	* g/dL	
HGB Delta	1,9	* g/dL	
HGB Sample Trans	1,961		
HGB Baseline Trans	2,962		
HGB Sample Flatness	11		
HGB Baseline Flatness	6		

Retic			
	%	#	
Neg RBC	96,53	36845	
Retic	3,47	129,1	x10 ⁹ cells/L
L Retic	77,51	1027	
M Retic	18,34	243	
H Retic	4,15	55	
IRF-H	4,15		
IRF-M+H	22,49		
Retic Cells Acquired		43993	
Retic Cells Analyzed		39587	
Retic Gated Cells		38170	
Retic Count		1325	

Routine Retic			
	%	#	
Retic	3,47	129,1	x10 ⁹ cells/L
CHr		34,1	pg
CHm		31,7	pg

RBC Rate

Retic Abs Flat

Retic Rate HGB Trans

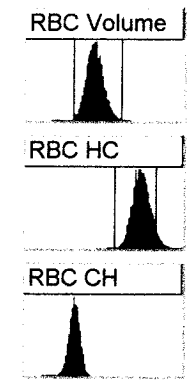
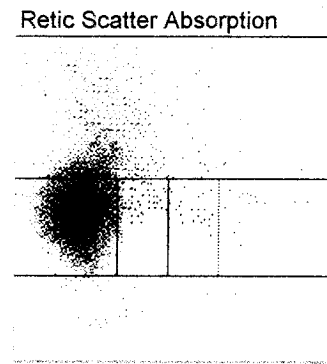
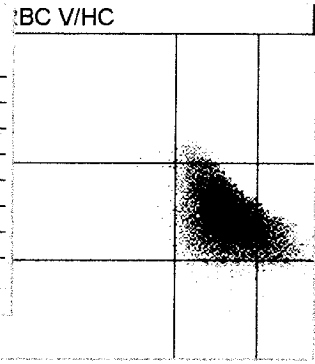
Sample/System Flags
 B-NO
 BIFR
 B-SAT
 BTO
 B-NV
 B-SUSP
 CHCMCE CHCM HCT HDW HGB MCH MCHC MCV RBC RDW CH CHDW
 N-RBC
 RBCIFR CHCM HCT HDW MCH MCHC MCV MPV PCT PDW PLT RBC RDW CH CHDW
 HGB-PL
 HGBIFR
 WBC-CE
 WBCSUB
 MPO-D
 PX-NO
 PX-PL
 PXIFR
 PX-SAT
 PXT0
 PX-NV
 RTC-L

Retic Parameters				
	Gated	Mature	Retic	
MCV	85,7	85,1	102,2	fL
CHCM H	37,3	37,4	33,4	g/dL
CH H	31,8	31,7	34,1	pg
CHDW	3,37	3,36	2,84	pg
RDW	12,4	12,0	9,0	%
HDW	3,13	3,04	2,40	g/dL
%Micro	0,6	0,6	0,1	
%Macro	0,0	0,0	0,2	
%Hypo	0,1	0,0	1,1	
%Hyper	9,4	9,6	0,2	
%Low CH	8,0	8,3	1,1	
%High CH	47,7	46,6	79,5	
MCV Delta			17,1	
CHCM Delta			-4,0	
CH Delta			2,4	
CHDW Delta			-0,52	
RDW Delta			-3,0	
RDW Delta			-0,64	g/dL

Morphology Flags
 MICRO
 MACRO
 HYPO
 HYPER +
 ANISO
 HC VAR
 LEFT SHIFT +
 BLASTS
 ATYPS
 NRBC
 IG
 LARGE PLT
 PLT CLUMPS
 MPO DEF
 RBC FRAG
 RBC Ghosts

Dopingkjoring Playback
 Aspiration Date/Time 07-Feb-09 19:32:1
 Sample Type PATIENT
 SID ISU00122645
 Rack & Position 15 3
 Sample Selectivity CBCDIFF\RETIC
 Age & Sex U
 Instrument Number IR07450540
 Species Human
 Sequence 154
FOR LABORATORY USE ONLY

WBC Differential		%	#	
WBC			14,1	x10 ⁹ cells/L
Neut	90,4		12,8	x10 ⁹ cells/L
Lymph	5,3		0,7	x10 ⁹ cells/L
Mono	3,3		0,5	x10 ⁹ cells/L
Eos	0,1		0,0	x10 ⁹ cells/L
Baso	0,2		0,0	x10 ⁹ cells/L
LUC	0,8		0,1	x10 ⁹ cells/L
NRBC	0,0		0,0	x10 ⁹ cells/L
LI			1,88	
MPXI			-15,4	



CBC			
WBC	14,1	x10 ⁹ cells/L	
RBC	4,37	x10 ¹² cells/L	
HGB	13,7	g/dL	
Cellular HGB	14,0	g/dL	
HCT	0,38	L/L	
MCV	87,0	fL	
MCH	31,3	pg	
MCHC	35,9	g/dL	
CHCM	36,8	g/dL	
CH	31,8	pg	
RDW	12,6	%	
HDW	2,88	g/dL	
PLT	384	x10 ⁹ cells/L	
MPV	8,4	fL	
PDW	45,5	%	
PCT L	0,003	L/L	

RBC			
RBC	4,37	x10 ¹² cells/L	
%Macro	0,3		
%Micro	0,4		
%Hypo	0,0		
%Hyper	5,6		
%Micro/%Hypo Ratio	9,76		

HGB			
HGB	13,7	g/dL	
Cellular HGB	14,0	g/dL	
HGB Delta	-0,3	g/dL	
HGB Sample Trans	1,966		
HGB Baseline Trans	2,962		
HGB Sample Flatness	12		
HGB Baseline Flatness	14		

Retic		%	#	
Neg RBC	96,68		35911	
Retic	3,32		145,4	x10 ⁹ cells/L
L Retic	77,49		957	
M Retic	18,38		227	
H Retic	4,13		51	
IRF-H	4,13			
IRF-M+H	22,51			
Retic Cells Acquired			42631	
Retic Cells Analyzed			38544	
Retic Gated Cells			37146	
Retic Count			1235	

Routine Retic			
	%	#	
Retic	3,32	145,4	x10 ⁹ cells/L
CHr		34,2	pg
CHm		31,7	pg

RBC Rate

Retic Abs Flat

Retic Rate	HGB Trans

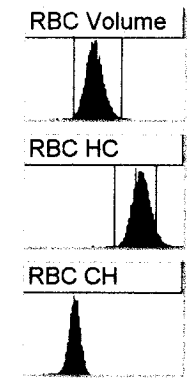
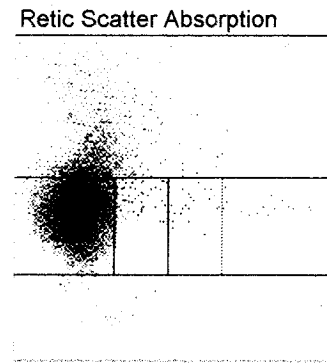
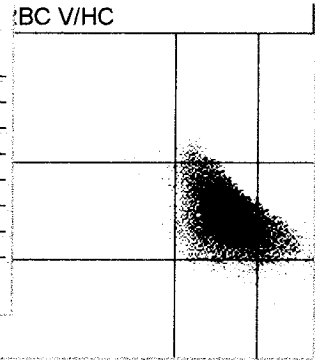
- Sample/System Flags
- B-NO
 - BIFR
 - B-SAT
 - BTO
 - B-NV
 - B-SUSP
 - CHCMCE
 - N-RBC
 - RBCIFR
 - HGB-PL
 - HGBIFR
 - WBC-CE
 - WBCSUB
 - MPO-D
 - PX-NO
 - PX-PL
 - PXIFR
 - PX-SAT
 - PXTO
 - PX-NV
 - RTC-L
 - RTCADA

Retic Parameters			
	Gated	Mature	Retic
MCV	85,7	85,1	102,4 fL
CHCM H	37,3	37,4	33,5 g/dL
CH H	31,8	31,7	34,2 pg
CHDW	3,41	3,39	2,83 pg
RDW	12,4	12,0	8,7 %
HDW	3,13	3,03	2,50 g/dL
%Micro	0,6	0,7	0,0
%Macro	0,0	0,0	0,0
%Hypo	0,1	0,0	0,7
%Hyper	9,4	9,6	0,2
%Low CH	8,2	8,5	0,9
%High CH	48,1	47,0	80,1
MCV Delta			17,3
CHCM Delta			-4,0
CH Delta			2,5
CHDW Delta			-0,56
RDW Delta			-3,3
HDW Delta			-0,55 g/dL

- Morphology Flags
- MICRO
 - MACRO
 - HYPO
 - HYPER +
 - ANISO
 - HC VAR
 - LEFT SHIFT ++
 - BLASTS
 - ATYPS
 - NRBC
 - IG
 - LARGE PLT
 - PLT CLUMPS
 - MPO DEF
 - RBC FRAG
 - RBC Ghosts

Dopingkjoring Playback
 Aspiration Date/Time 07-Feb-09 19:46:4
 Sample Type PATIENT
 SID ISU00122645
 Rack & Position 15 1
 Sample Selectivity CBCDIFF\RETIC
 Age & Sex U
 Instrument Number IR07450540
 Species Human
 Sequence 161
FOR LABORATORY USE ONLY

WBC Differential		%	#	
WBC			13,6	x10 ⁹ cells/L
Neut	90,2		12,3	x10 ⁹ cells/L
Lymph	5,4		0,7	x10 ⁹ cells/L
Mono	3,5		0,5	x10 ⁹ cells/L
Eos	0,2		0,0	x10 ⁹ cells/L
Baso	0,2		0,0	x10 ⁹ cells/L
LUC	0,6		0,1	x10 ⁹ cells/L
NRBC	0,0		0,0	x10 ⁹ cells/L
LI			1,87	
MPXI			-15,7	



CBC			
WBC	13,6	x10 ⁹ cells/L	
RBC	4,42	x10 ¹² cells/L	
HGB	13,6	g/dL	
Cellular HGB	14,1	g/dL	
HCT	0,38	L/L	
MCV	87,1	fL	
MCH	30,8	pg	
MCHC	35,3	g/dL	
CHCM	36,8	g/dL	
CH	31,9	pg	
RDW	12,7	%	
HDW	2,90	g/dL	
PLT	392	x10 ⁹ cells/L	
MPV	8,4	fL	
PDW	45,3	%	
PCT	L 0,003	L/L	

RBC			
RBC	4,42	x10 ¹² cells/L	
%Macro	0,3		
%Micro	0,4		
%Hypo	0,0		
%Hyper	5,8		
%Micro/%Hypo Ratio	10,27		

HGB			
HGB	13,6	g/dL	
Cellular HGB	14,1	g/dL	
HGB Delta	-0,6	g/dL	
HGB Sample Trans	1,970		
HGB Baseline Trans	2,960		
HGB Sample Flatness	42		
HGB Baseline Flatness	5		

Retic		%	#	
Neg RBC	96,43		36344	
Retic	3,57		157,6	x10 ⁹ cells/L
L Retic	80,07		1077	
M Retic	16,13		217	
H Retic	3,79		51	
IRF-H	3,79			
IRF-M+H	19,93			
Retic Cells Acquired			43605	
Retic Cells Analyzed			39097	
Retic Gated Cells			37689	
Retic Count			1345	

Routine Retic			
	%	#	
Retic	3,57	157,6	x10 ⁹ cells/L
CHR		34,1	pg
CHm		31,7	pg

RBC Rate

Retic Abs Flat

Retic Rate	HGB Trans

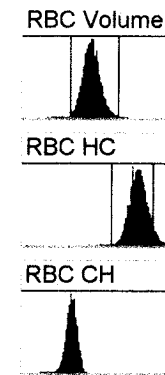
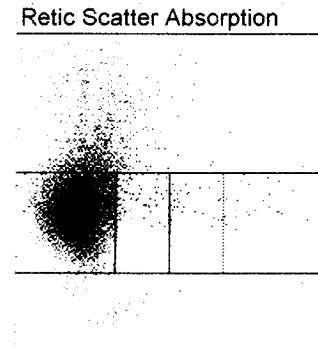
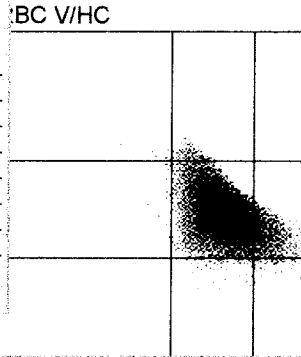
- Sample/System Flags
- B-NO
 - BIFR
 - B-SAT
 - BTO
 - B-NV
 - B-SUSP
 - CHCMCE
 - N-RBC
 - RBCIFR
 - HGB-PL
 - HGBIFR
 - WBC-CE
 - WBCSUB
 - MPO-D
 - PX-NO
 - PX-PL
 - PXIFR
 - PX-SAT
 - PXTO
 - PX-NV
 - RTC-L
 - RTCAD

Retic Parameters			
	Gated	Mature	Retic
MCV	85,8	85,2	102,1 fL
CHCM H	37,3	37,4 H	33,5 g/dL
CH H	31,8	31,7	34,1 pg
CHDW	3,40	3,39	2,87 pg
RDW	12,4	12,0	9,2 %
HDW	3,12	3,03	2,49 g/dL
%Micro	0,6	0,6	0,1
%Macro	0,0	0,0	0,1
%Hypo	0,1	0,0	1,1
%Hyper	9,3	9,5	0,4
%Low CH	7,9	8,2	1,1
%High CH	48,3	47,2	79,8
MCV Delta			16,9
CHCM Delta			-3,9
CH Delta			2,4
CHDW Delta			-0,52
RDW Delta			-2,8
HDW Delta			-0,54 g/dL

- Morphology Flags
- MICRO
 - MACRO
 - HYP
 - HYPER +
 - ANISO
 - HC VAR
 - LEFT SHIFT ++
 - BLASTS
 - ATYPS
 - NRBC
 - IG
 - LARGE PLT
 - PLT CLUMPS
 - MPO DEF
 - RBC FRAG
 - RBC Ghosts

Dopingkjoring Playback
 Aspiration Date/Time 07-Feb-09 19:47:3
 Sample Type PATIENT
 SID ISU00122645
 Rack & Position 15 1
 Sample Selectivity CBCDIFF\RETIC
 Age & Sex U
 Instrument Number IR07450540
 Species Human
 Sequence 162
FOR LABORATORY USE ONLY

WBC Differential		%	#	
WBC			13,7	x10 ⁹ cells/L
Neut	91,0		12,5	x10 ⁹ cells/L
Lymph	5,1		0,7	x10 ⁹ cells/L
Mono	3,1		0,4	x10 ⁹ cells/L
Eos	0,1		0,0	x10 ⁹ cells/L
Baso	0,1		0,0	x10 ⁹ cells/L
LUC	0,6		0,1	x10 ⁹ cells/L
NRBC	0,0		0,0	x10 ⁹ cells/L
LI			2,14	
MPXI			-15,5	



CBC				
WBC	13,7		x10 ⁹ cells/L	
RBC	4,43		x10 ¹² cells/L	
HGB	13,8		g/dL	
Cellular HGB	14,2		g/dL	
HCT	0,39		L/L	
MCV	87,1		fL	
MCH	31,1		pg	
MCHC	35,8		g/dL	
CHCM	36,8		g/dL	
CH	31,9		pg	
RDW	12,5		%	
HDW	2,89		g/dL	
PLT	374		x10 ⁹ cells/L	
MPV	8,6		fL	
PDW	47,5		%	
PCT	L 0,003		L/L	

RBC				
RBC	4,43		x10 ¹² cells/L	
%Macro	0,3			
%Micro	0,4			
%Hypo	0,0			
%Hyper	5,9			
%Micro/%Hypo Ratio	9,38			

HGB				
HGB	13,8		g/dL	
Cellular HGB	14,2		g/dL	
HGB Delta	-0,4		g/dL	
HGB Sample Trans	1,957			
HGB Baseline Trans	2,960			
HGB Sample Flatness	29			
HGB Baseline Flatness	7			

Retic		%	#	
Neg RBC	96,85		36198	
Retic	3,15		139,6	x10 ⁹ cells/L
L Retic	77,99		918	
M Retic	17,76		209	
H Retic	4,25		50	
IRF-H	4,25			
IRF-M+H	22,01			
Retic Cells Acquired			42885	
Retic Cells Analyzed			38651	
Retic Gated Cells			37375	
Retic Count			1177	

Routine Retic			
	%	#	
Retic	3,15	139,6	x10 ⁹ cells/L
Chr		34,3	pg
CHm		31,7	pg

RBC Rate

Retic Abs Flat

Retic Rate

HGB Trans

Sample/System Flags
 B-NO
 BIFR
 B-SAT
 BTO
 B-NV
 B-SUSP
 CHCMCE
 N-RBC
 RBCIFR
 HGB-PL
 HGBIFR
 WBC-CE
 WBCSUB
 MPO-D
 PX-NO
 PX-PL
 PXIFR
 PX-SAT
 PXTO
 PXNW
 RTC-L
 RTCADA

Retic Parameters			
	Gated	Mature	Retic
MCV	85,8	85,2	102,5 fL
CHCM H	37,3	37,4 H	33,6 g/dL
CH H	31,8	31,7	34,3 pg
CHDW	3,43	3,42	2,78 pg
RDW	12,5	12,1	8,9 %
HDW	3,16	3,08	2,49 g/dL
%Micro	0,6	0,6	0,0
%Macro	0,0	0,0	0,2
%Hypo	0,1	0,1	1,1
%Hyper	9,7	9,9	0,3
%Low CH	8,0	8,2	0,3
%High CH	48,4	47,3	80,1
MCV Delta			17,3
CHCM Delta			-3,9
CH Delta			2,5
CHDW Delta			-0,63
RDW Delta			-3,2
HDW Delta			-0,55 g/dL

Morphology Flags

MICRO
 MACRO
 HYPO
 HYPER +
 ANISO
 HC VAR
 LEFT SHIFT +
 BLASTS
 ATYPS
 NRBC
 IG
 LARGE PLT
 PLT CLUMPS
 MPO DEF
 RBC FRAG
 RBC Ghosts